

Smart Social Distancing

Maintaining the Distance the Safe Way

Pascal Witprächtiger – Principal IoT & Analytics Architect – 11.9.2020

THE CONSEQUENCE OF NOT MAINTAINING DISTANCE

Chicago Tribune

SECTIONS SEARCH

Mayor Lori Lightfoot blasts Chicago alderman for leaking audio of...

Coronavirus in Illinois updates: 625 new known COVID-19 cases reported a...

Column: The truth about anti-fa's secret senior soldiers. Trump is on to us...

Chicago restaurants reckon with accusations of racism in a social media storm

CORONAVIRUS

Coronavirus spreads beyond meat plants with outbreaks at 60 US baking, agricultural, dairy facilities, raising specter of food shortages

Health News | Jun 19, 2020

Covid-19: Tönnies closes largest German pork plant (updated)

Whoever thought that things in Europe were already easing with regard to Covid-19 and the closure of meat plants, might want to think again. One of Germany's largest pork plants had to temporarily close due to Covid-19 infe...

Home Corona Politics Business Society Sport Education

Dutch meat processing plant closed as 45 workers test positive for Covid-19

Business Corona f t in RSS May 21, 2020



Photo: Depositphotos.com

There are strong indications that coronavirus will lead to more slaughterhouse and meat factory closures in the Netherlands, FNV spokesman John Klijn has told the AD, following news of a second outbreak at a Vion plant in the south.

CALIFORNIA

Coronavirus outbreaks hits Farmer John, 8 other plants in Vernon

CORONAVIRUS

Welcome, please scan your QR code: In South Korea, a high-tech registry for nightlife amid coronavirus

Officials say no turning back on reopening even as coronavirus cases rise

Face masks, shields and landing zones. How one L.A. restaurant reopened its dining room

Who gets the blame if California sees major new coronavirus outbreaks with reopening?

HUMANS

WE LOVE TO BE CLOSE

How do you not forget to keep the distance?



What is exactly 1.5 meter? Am I too close or too far?



How can I tell the other to keep a distance without offending?

TELLING TO KEEP DISTANCE IS ONE
KNOWING IS SOMETHING DIFFERENT



MOBILE APPS

ARE NOT THE ANSWER

New standard by Google and Apple
only for government

Bluetooth is not always on

Invading employee privacy

Different phones,
different accuracy

Mobile phones not always allowed

Might not be clear if people are really
using the app during workhours

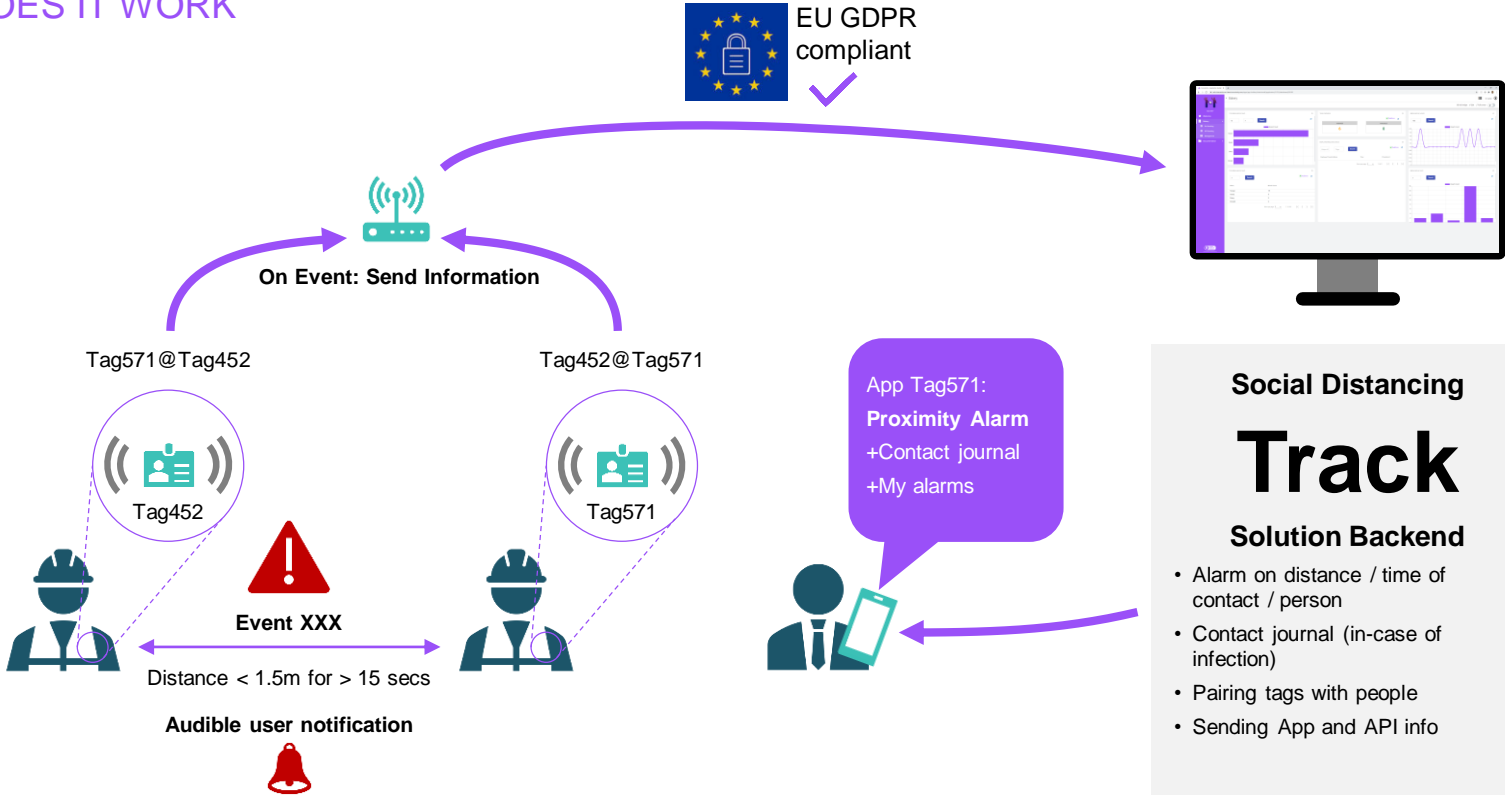
SMART TAGS

IOT TO THE RESCUE

- Monitoring for proximity breaches ONLY
- Bluetooth Beacon Technology Based
- Transparent & Accurate
- Warning for potential breaches through direct audible feedback to user
- No Tracking and Tracing
- Minimal Privacy Intrusion
- Contact Chain reporting for designated authorities

SMART SOCIAL DISTANCING

HOW DOES IT WORK



SMART SOCIAL DISTANCING

SIMPLICITY IS THE ANSWER

ADMINISTRATION



- Simple procedures for onboarding tags and controllers (in batch)
- Device Management dashboard for health status tags & controllers

SOCIAL DISTANCING TASKFORCE



- Dashboard with up to date social distance status information
- Reporting contact chains while adhering to privacy

EMPLOYEES



- Employee on- and offboard the tag with a simple event
- Employee wears the tag visible
- Gets general info through public dashboard

TURN DATA INTO SAFER WORKSPACES

WITH SMART SOCIAL DISTANCING



**ENSURE
BUSINESS
CONTINUITY**



**COMPLY TO
NEW BUSINESS
REGULATIONS**



**ENSURE
WORKERS SAFETY**



**MAXIMIZE POSITIVE
BRAND IMPACT**

SMART SOCIAL DISTANCING

FOR SAFER WORKPLACES



Device
agnostic



Solution
accelerators



Role-based
access



Globally
deployable

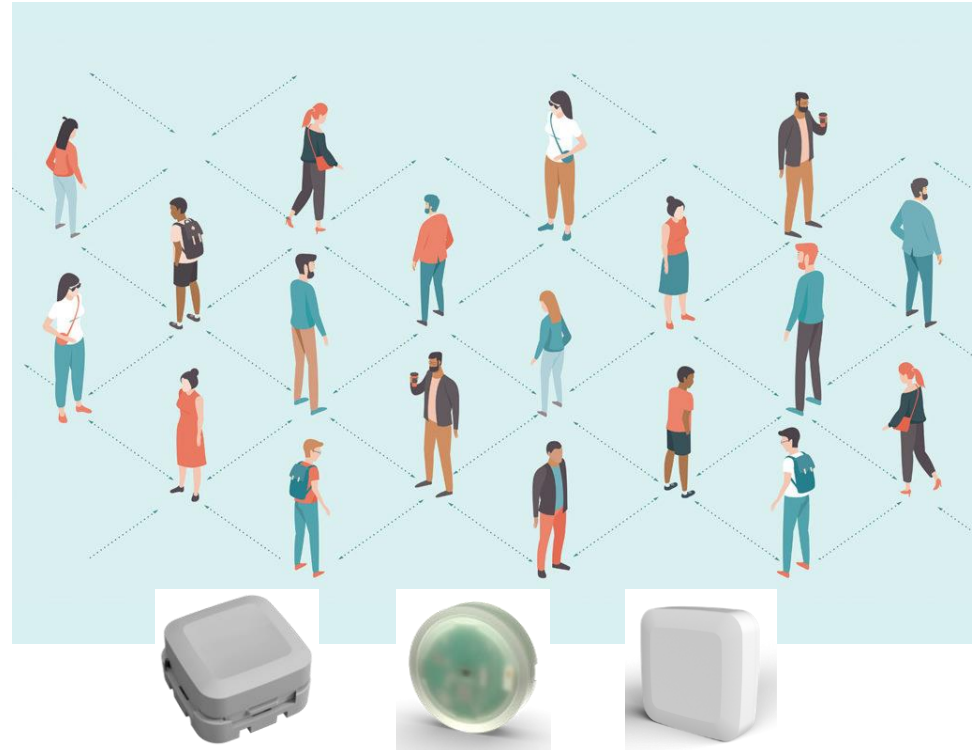


Rapidly
extensible

SMART SOCIAL DISTANCING

RECAP SOLUTION

- Proximity monitoring in any area, such as offices, retail stores and manufacturing shop floors inside as out.
- Accurate distancing based on calibrated Bluetooth Beacons.
- Simple onboarding / offboarding procedures
- Direct Audible feedback to user in case of proximity breach
- Role based access
- Live Dashboards incl. worst offenders
- Up to date contact chain reporting
- Proofed indoor tracking technology



Software AG

Software AG

Technology leader for 50 years in data management and application development platforms

€890+
Million
In Revenue

+ 10%
Annual Recurring

€ 500m
Cash + equivalents

REVENUE

By Region*

Region	Percentage
EMEA	49%
Americas	42%
APJ	9%

By Business Lines*

Business Line	Percentage
DBP	52%
Services	23%
A&N	25%

4,948+
Employees*

Department	Percentage
Consulting & Services	38%
R&D	28%
S&M	19%
Admin	13%

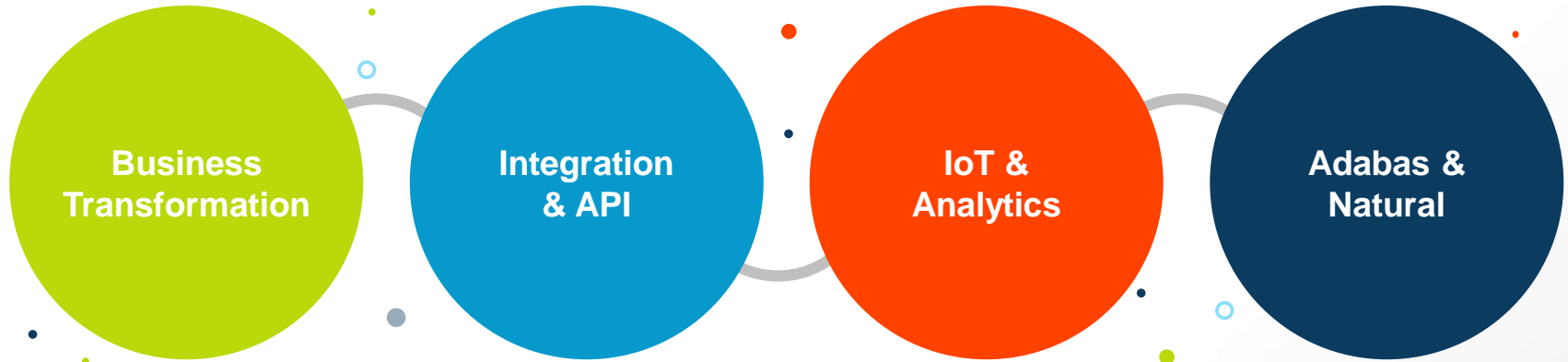
€2.3bn
Market Cap

~66% Free Float

* Based on financial results FY 2019

DRIVEN BY THE RIGHT PORTFOLIO

4 BUSINESS LINES



Different delivery models in IoT

For different customer needs

Flexibility & Sophistication



IoT SaaS

Fast Entry

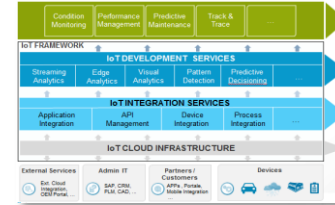
- Self-service, cloud, out-of-the-box
- Pre-defined solution accelerators



IoT PaaS

Fan Out (Departmental)

- High productivity, fast go-to-market
- Expand options (Custom Analytics, Integration, App Dev, Edge)
- Enables multiple IoT use cases with white-labeling / branding



IoT Framework

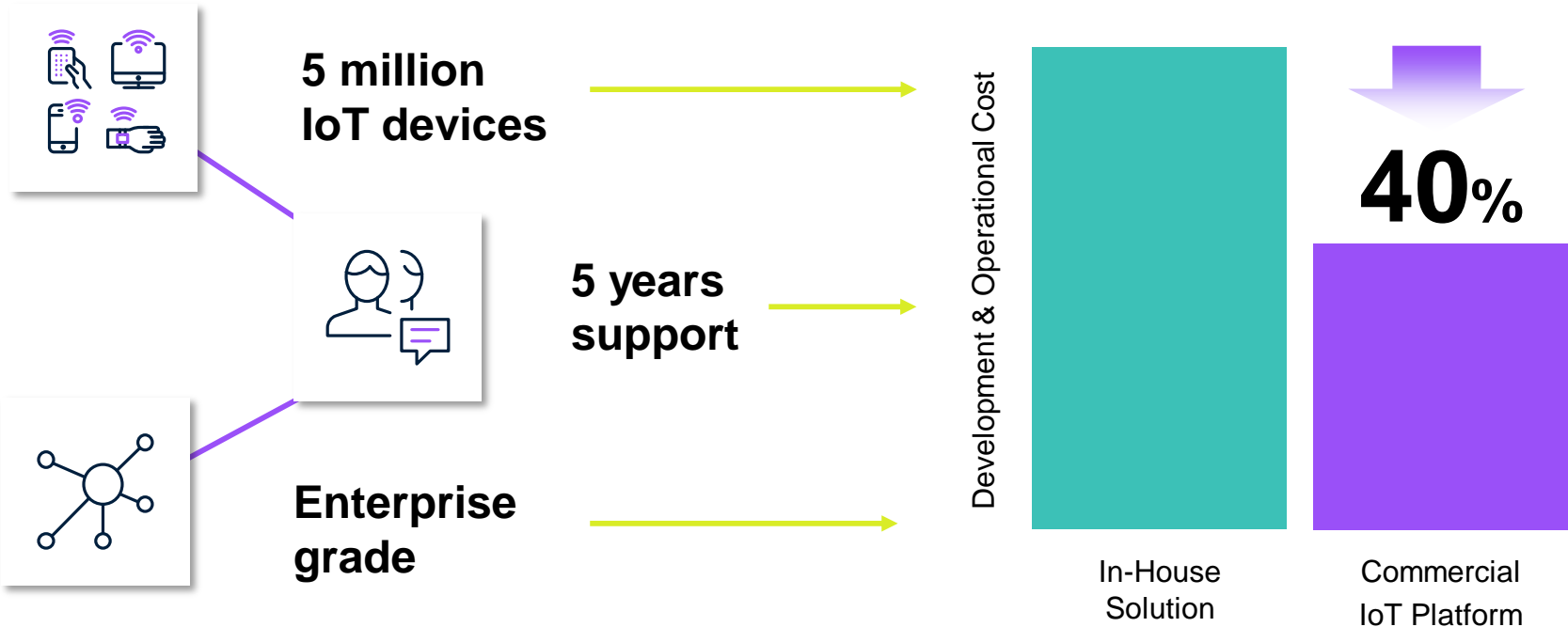
Scale Out (Enterprise Level)

- Cross divisional end-to-end company processes
- Coding, professional developers
- Existing and new IoT application fully interwoven

CUMULOCITY IoT

Growing Maturity Level over Time

IoT platforms are more cost effective



Sources: Build, Acquire and Buy: An AEP Analysis, MachNation

FURTHER INFORMATION

GET IN CONTACT WITH US

Events

See how, together, we can create the living connections that matter to the world

Webinars



Why IoT projects fail & how to beat the odds report

Customers

How our customers use our platform to connect their things and innovate their businesses

Cumulocity IoT Case Studies



Cumulocity IoT Free Trial

Pascal Witprächtiger

*Principal IoT & Analytics Architect
Software AG*



pascal.witpraechtiger@softwareag.com

Linked in



